



The suction casing is the key to an effective source extraction system, it must be light weight and well designed while at the same time efficient at capturing the dust.

Dustcontrol's suction case kits include a variety of clamping rings and spacers to give you flexibility when fitting to different hand power tools.

Capture dust at the source.

TECHNICAL DATA	Con.	Q_{nom}	Δp_{nom}
Small hand-held tools	ø1.25"/32 mm	90 cfm/150 m ³ /h	14 inwg/3.5 kPa
Hand-held tools	ø1.5"/38 mm	120 cfm/200 m ³ /h	14 inwg/3.5 kPa
Large hand-held tools e.g. 9" depressed centre disc	ø1.5"/38 mm	150 cfm/250 m ³ /h	20 inwg/5.0 kPa

Suction Casing Kit for Depressed Center Wheels, Abrasive Discs and Diamond Discs (N,K):

1

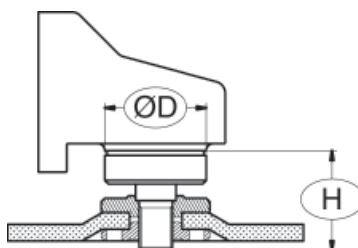
Measure the diameter of the disc.



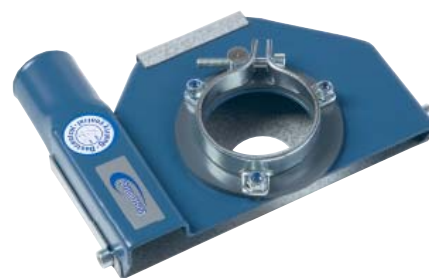
Note: The disc has to be thinner than 18 mm.

2

Measure the diameter of the mounting collar on the machine - $\varnothing D$ and the height of the machine - H.



3



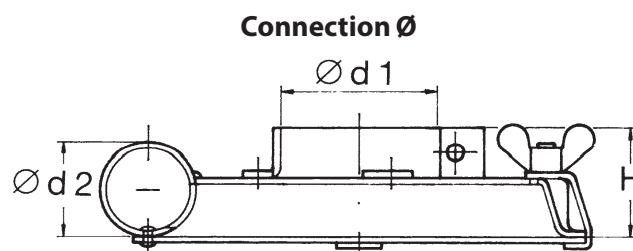
Disc Diameter	$\varnothing D$ (in/mm)	H (in/mm)	Hose connection, \varnothing (in/mm)	Part No
4 1/2" (115 mm)	1.6"-1.9"/40-49	1.2"-1.8"/31-46	1.25"/32	6676
5" (125 mm)	1.6"-1.8"/40-45	1.2"-1.8"/31-46	1.25"/32	6677**
5" (125 mm)	1.8"-2.1"/46-53	1.2"-1.8"/31-46	1.25"/32	6678
7" (175 mm)	2.4"-2.6" & 2.9"-3"/62-65 & 74-77	1.2"-2"/31-51	1.5"/38	6679
9"*	4.4"/112	1.5"/37	1.5"/38	6221*
9"	2.7"/68	2"/51	1.5"/38	6202*
9"	2.9"/74	2.1"/54	1.5"/38	6302*
9"	2.9"/74	1.5"/37	1.5"/38	6349*
9"	2"/50	1.9"/47	1.5"/38	6500*
9"	2.4"/62	2.1"/54	1.5"/38	6416*
9"	2.4"/62	2"/50	1.5"/38	6438*
9"	2.4"/62	1.9"/48	1.5"/38	6555*
9"	2.6"/65	1.6"/40	1.5"/38	6842*
9"	2.5"/64	2"/52	1.5"/38	6427*
	2.3"/58	2.1"/54	1.5"/38	6537*

Model specific suction casings

Model	Size of the disc	H (in/mm)	Hose connection, \varnothing (in/mm)	Part No
Atlas Copco GTG 40 F066-23	9"	1.6"/41	1.5"/38	6805*
Georges Renault KL 365	9"	2.3"/59	1.5"/38	6388*

*With the clamping rings welded on the suction casings.

**Some Hitachi machines have a $\varnothing 1.6/40$ mm conical neck. With these it is necessary to buy an aluminium ring (Part No 6270). When mounted on the machine this aluminium ring enlarges the $\varnothing D$ of the machine to 2"/50 mm – therefore choose suction casing package 5" – Part No 6678.



Suction Casing Kit for Diamond Cup Wheels (D):

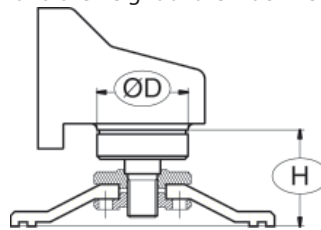
1

Measure the diameter of the disc.



2

Measure the diameter of the mounting collar on the machine - $\varnothing D$ and the height of the machine - H.



3



10

Disc Diameter	$\varnothing D$ (in/mm)	H (in/mm)	Hose connection, \varnothing (in/mm)	Part No
4 1/2" (115 mm)	1.6"–1.9"/40–49	1.9"–2.1"/49–54	1.25"/32	6681
5" (125 mm)	1.6"–1.9"/40–49	1.9"–2.8"/49–70	1.25"/32	6682
5" (125 mm)	2"/50	1.5"–2.4"/38–61	1.25"/32	6673
7" (175 mm)	2.1"–2.4"/54–61	2.5"–2.8"/63–72	1.5"/38	6683
7" (175 mm)	2.4"–2.6" & 2.9"–3" / 62–65 & 74–77	2.5"–3.4"/63–86	1.5"/38	6684

Suction Casing Kit for Sanding Discs (F):

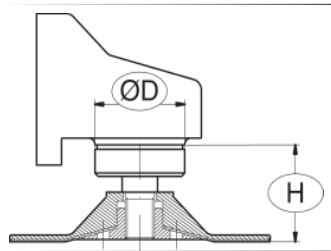
1

Measure the diameter of the disc.



2

Measure the diameter of the mounting collar on the machine - $\varnothing D$ and the height of the machine - H.



3



Disc Diameter	$\varnothing D$ (in/mm)	H (in/mm)	Part No	Connection \varnothing (in/mm)
1½–3" (38–75 mm)	1.1"/27	*	6833*	1.25"/32
4" (100 mm)	1.6"–1.9"/40–49	1.5"–1.7"/39–44	6670	1.25"/32
4½" (115 mm)	1.6"–1.9"/40–49	1.5"–1.9"/39–48	6671	1.25"/32
5" (125 mm)	1.6"–1.9"/40–49	1.5"–1.9"/39–48	6672	1.25"/32
5" (125 mm)	2"/50	1.5"–2.1"/38–61	6673	1.25"/32
7" (175 mm)	2.1"–2.4"/54–61	2"–2.3"/50–59	6674	1.5"/38
7" (175 mm)	2.4"–2.6" & 2.9"–3"/62–65 & 74–77	2"–2.9"/50–73	6675	1.5"/38

* Some Hitachi machines have a $\varnothing 1.6"/40$ mm conical neck. With these it is necessary to buy an aluminium ring (Part No 6270). When mounted on the machine this aluminium ring enlarges the $\varnothing D$ of the machine to 2"/50 mm – therefore choose suction casing package 5" N, K – Part No 6678.



Suction Casing Kit for Abrasive Cup Stone (S):

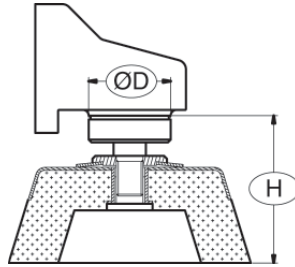
1

Measure the diameter of the cup.



2

Measure the diameter of the mounting collar on the machine - $\varnothing D$ and the height of the machine - H.



3



Cup Diameter	$\varnothing D$ (in/mm)	H (in/mm)	Connection, \varnothing (in/mm)	Part No
5" (125 mm)	2"-3"/50-77	1.8"-3.2"/46-81	1.5"/38	6680

Model specific suction casings

Model	Size of the disc	Connection, \varnothing (in/mm)	Part No
Bosch	6" (150 mm)	1.5"/38	6023
Atlas Copco GTG 40 S060	6" (150 mm)	1.5"/38	6353

Hammer Drills, Chisels and Breakers



6621



6622



6077



6078



Bellow to Part No 6078, 6622 and 6621



7033

6001

Part No 6622 is perfect for small chisel hammers – and hammer drills.
Part No 6077 is perfect for small chisel hammers.



Suction casings B, H, M, L

Tool connection Ø D (in/mm)	Hose connection (in/mm)	Height (in/mm)	Part No
2.4"/61	1.5"/38	7"/178	6078
1.9"/48	1.5"/38	6.2"/158	6621
1.7"/43	1.5"/38	6.2"/158	6622
1.25"/32	1.25"/32	4.4"/112	6077
–	2"/50	3.9"/100	6001
Bellow to part no 6078, 6621, 6622			6130

Model specific suction casings

Model	Hose connection Ø D (in/mm)	Part No
Atlas Copco RRD 37/RRD 57	1.5"/38	6229
Atlas Copco BBD 11/RRC73	1.5"/38	6152

Note: For longer points or hammer drill bits, use two or more bellows, Part No 6130. These will slip on to each other.

Reciprocating Saw

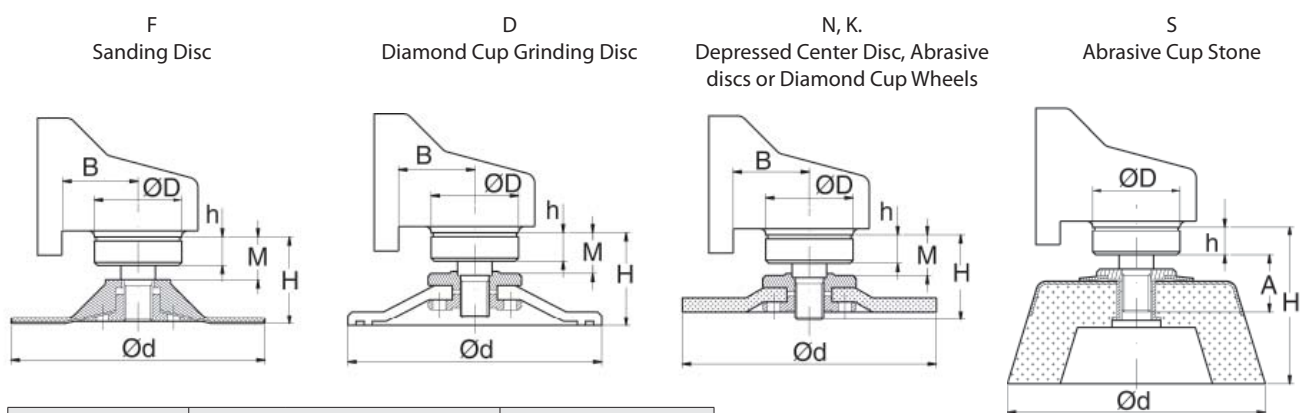
Suction casings C

Hose connection (in/mm)	Part No	Machine model
1.25"/32	6290	Atlas Copco SSE 1000 X/SQ/, Milwaukee 65xx-xx (Sawzall)



Circular Saw

Hose connection (in/mm)	Part No	Machine model
1.25"/32	6269	Milwaukee 6378



Machine		Model			Type	
D	d	H	h	A	B	M

LEGEND

- F Sanding disc
- D Diamond Cup Wheel
- N Depressed Centre disc
- K Abrasive disc, Diamond Cup wheel
- S Abrasive Cup stonel

Information Fax Back Form

In this catalogue, we have included suction casings for the most common power tool types and manufacturers. If you do not find the suction casings here for your tool, send us the dimensions according to the table (diagram) below or call your local representative.

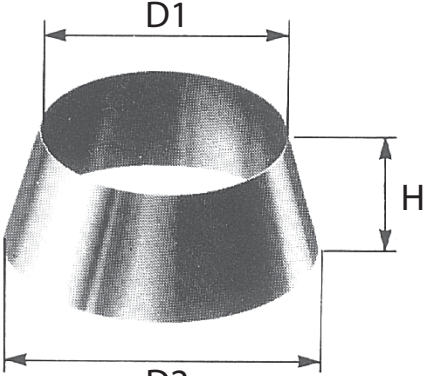
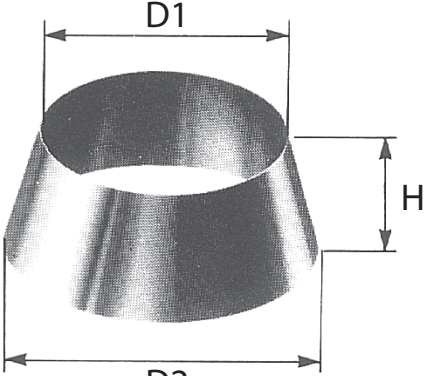
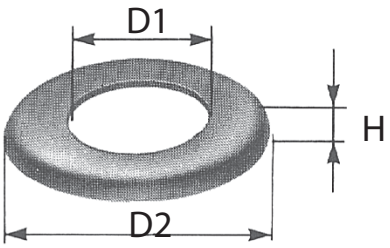
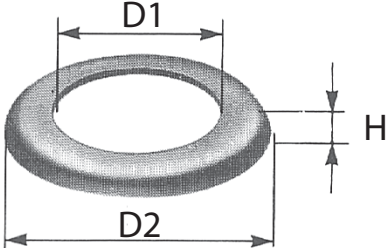
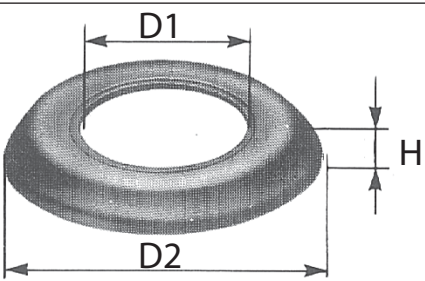
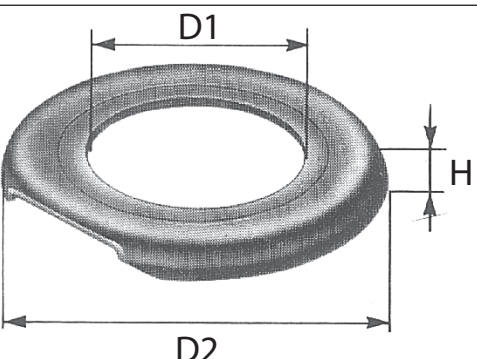
Message to:

From :

This message contains page (s) in total

Please refer to the back page of this catalogue to find the telephone, fax number or e-mail address for your local Dustcontrol rep. It is important that measurements should be taken as accurately as possible to avoid incorrect selections, e.g. with a Vernier Caliper.

Suction Casing, consumable parts

	Description	Dimension			Part no	
			D ₁ in/mm	D ₂ in/mm		H in/mm
	Plastic ring for saucer grinder	5S	4.8"/121	5.5"/139	2"/50	6003
		6S	5.8"/147	6.5"/164	2"/50	6004
	Rubber collar for fibre disc (F)	1 ½ F	1.5"/39	2.3"/59	.9"/23	6314
		2 F	1.5"/39	2.7"/69	.9"/23	6313
		3 F	1.5"/39	3.7"/95	1"/25	6312
		4 F	2.8"/72	4.6"/117	.5"/13	6182
		4 ½ F	2.8"/72	5.3"/135	.5"/13	6181
		4 ½ F	2.8"/72	5.3"/135	.9"/23	618100
		5 F	2.8"/72	5.7"/145	.5"/13	6195
	Rubber collar for fibre disc (F)	5 F	3.8"/96	5.9"/150	.6"/15	6006
	Rubber collar for osc. sanding machine	5 O	2.8"/72	5.7"/145	1.5"/38	6212
		6 O	3.8"/96	6.7"/170	1.1"/28	6180
	Rubber collar for fibre disc (F)	7 F	4.4"/112	7.7"/196	.7"/19	6002
		7 F	4.4"/112	7.7"/196	1.4"/35	6034
		8 F	4.4"/112	8.7"/221	1.6"/41	6211
		9 F	4.5"/113	10"/250	1.25"/32	6039



Customized Suction Casings

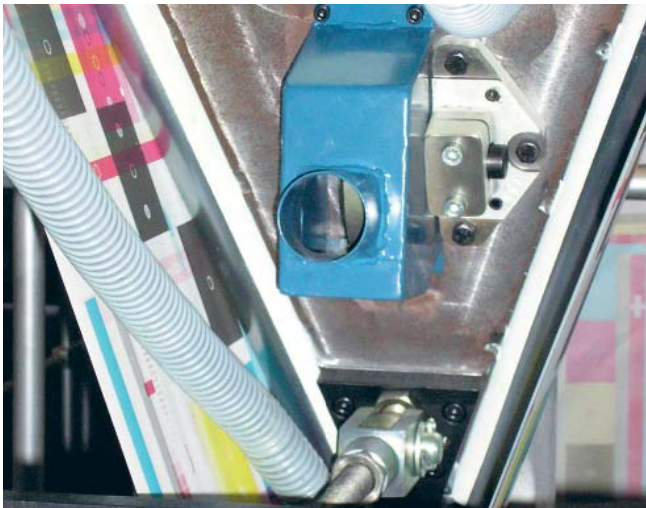
Dustcontrol can customize the suction casing to suit the production process.



Robot deburring for telecom parts.



Food packaging industry.



Suction casing mounted on slitter knife in printing press.



Suction casing mounted on slitter knife in printing press.



Suction casing mounted on slitter knife in printing press.